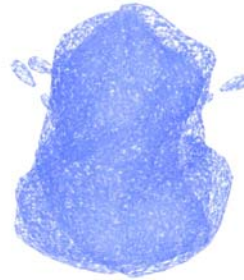




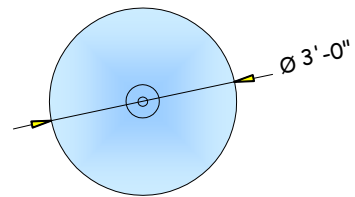
The **Bubblers** is a ground spray element that emits a low foaming mound of water. The feature flow rates can be adjusted to increase or decrease bubbler height and volume. The Bubbler is designed for wet deck applications with no standing water.



### FEATURE DATA

Flow Range: 20 to 30 GPM  
 Supply Line: 1" pipe  
 Structure: PVC Plastic  
 Installation: Cast into Concrete

### TOP VIEW SPLASH ZONE



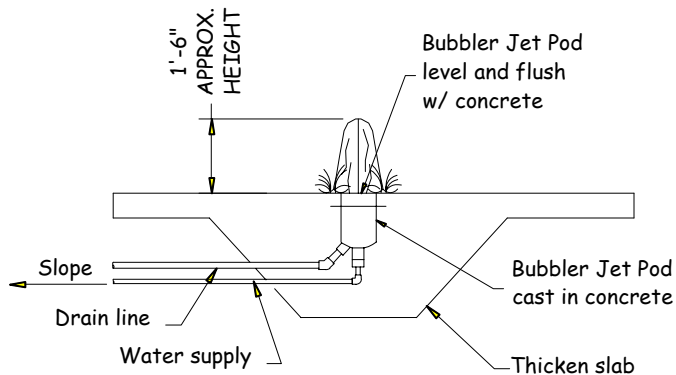
Toll Free Phone:  
 1-877-632-0503

Local Phone:  
 952-445-5135

Fax:  
 952-345-6444

Mail to:  
 5852 Baker Road  
 Minnetonka, MN  
 55345

### CAD DRAWING



# Product Profile

*The more water...the more fun*

